

Bahçeşehir University

DEPARTMENT OF  
**ARCHITECTURE**

2023 - 2024 | Student Projects

Faculty of Architecture and Design  
Department of Architecture

-

Student Projects | 2023-2024 Academic Year

## **FACULTY OF ARCHITECTURE AND DESIGN**

Design is not just a profession; it is a way of understanding, transforming, and shaping the future. At Bahçeşehir University Faculty of Architecture and Design, we embrace this philosophy by placing an interdisciplinary approach at the heart of our education system, offering our students a high-quality education that meets international standards and aligns with contemporary needs. Our faculty—which includes the departments of Architecture, Interior Architecture and Environmental Design, Industrial Design, and Textile and Fashion Design—operates with the vision of nurturing individuals who develop creative solutions ranging from the urban scale to product design.

This catalog brings together a curated selection of student projects from studio and design courses, showcasing their design skills, research-driven problem-solving abilities, critical thinking, and innovative approaches. Regularly updated each term, this publication serves as a significant resource documenting both our faculty's educational philosophy and our students' progress.

Our faculty supports its students with an enriched academic and cultural program that extends beyond the classroom, including technical excursions, seminars, exhibitions, international workshops, and exchange programs. Collaborations with Berlin International University of Applied Sciences, annual summer/winter schools in Japan, Spain, Austria, and Italy, as well as Erasmus/World Exchange programs, provide our students with a global design perspective.

The central location of our faculty in Beşiktaş/Yıldız offers students direct engagement with Istanbul's historical and cultural heritage while also enabling them to incorporate strong urban contexts into their design projects. Through our CO-OP program, students gain early professional experience, integrating sectoral engagement into their academic curriculum.

The projects featured in this catalog reflect our students' innovative and original ideas across various scales of design disciplines. Our faculty is committed to educating designers who are not only attuned to the needs of today's world but also responsive to future challenges, uphold ethical values, embrace cultural heritage, and actively engage in the globalized world. These projects stand as concrete evidence of our students' creative potential and our faculty's visionary approach to education. We hope this catalog serves as an inspiring resource that reflects the productive and dynamic academic environment of our faculty.

Prof. Dr. Murat Dündar  
Dean, Faculty of Architecture and Design  
Bahçeşehir University

## DEPARTMENT OF ARCHITECTURE

### Vision of the Department

To be a pioneering department that raises professionals who constantly develop in terms of education, scientific research, and contribution to society, with high international recognition in the field of Architecture and sensitivity towards environmental problems and the city.

### Mission of the Department

Bahçeşehir University Faculty of Architecture and Design, Department of Architecture aims to use the potentials of being in the center of Istanbul to do the following; to support formal education with extra-curricular education opportunities, an innovative education approach, and use of leading education methods and technologies; to adopt the principle of raising professionals who can engage in interdisciplinary and innovative initiatives and studies via sectoral collaborations while considering sustainable development goals, have critical and creative perspectives, take part in academic and professional studies on a local and global scale with their knowledge and skills, and contribute to the society.

Prof. Dr. Devrim Işıkkaya  
BAU Head of the Department of Architecture

## ACADEMIC STAFF

Prof. Murat DÜNDAR (Dean)	*Assoc. Prof. Bülent Onur TURAN
Prof. Ali Devrim IŞIKKAYA (Department Chair)	*Assoc. Prof. Devrim ÇİMEN
Assoc. Prof. Yiğit YILMAZ (Associate Dean)	*Assoc. Prof. Fatih YAZICIOĞLU
Assist Prof. Sinem KÜLTÜR (Associate Dean)	*Assoc. Prof. Feride Pınar ARABACIOĞLU
Prof. Emine Ümrhan TOPÇU	*Ph.D Ahmet Utku YAZGAN
Prof. İrem MARO	*Ph.D Tanem KÖTEŞLİ AYDIN
Prof. Meltem VATAN	*Instructor Ahmet KAPTAN
Prof. Nilay ÜNSAL GÜLMEZ	*Instructor Boğaçhan DÜNDARALP
Prof. Sema SOYGENİŞ	*Instructor Deniz TÜMERDEM
Assist Prof. Aslı CAN	*Instructor Dilara DEMİRALP
Assist Prof. Belinda TORUS	*Instructor Fatma ÖZDOĞAN
Assist Prof. Berna YAYLALI	*Instructor Gözde KIZILKAN
Assist Prof. Göksun AKYÜREK ALTÜRK	*Instructor Hande CEYLAN
Assist Prof. Durnev ATILGAN YAĞAN	*Instructor Kutsan ÖZORAL
Assist Prof. Hatidza ISANOVIC ÇAPKIN	*Instructor Meriç ÜĞDÜL
Assist Prof. Maan CHIBLI	*Instructor Seda CİVELEK
Assist Prof. Melek Elif SOMER	*Instructor Sena ÖZFİLİZ
Assist Prof. Mine DİNÇER	*Instructor Sepehr ROSHANSHOMAL
Assist. Prof. Neslihan AYDIN YÖNET	*Instructor Sıtkı Ahmet ERGELEN
Assist Prof. Pınar ŞAHİN	*Instructor Süha KÜLTÜR
Assist Prof. Serengül SEÇMEN	*Instructor Canan GANIÇ DÖNMEZ
Assist Prof. Zeynep Gül SÖHMEN TUNAY	*Instructor Tansel DALGALI
Instructor Nazlı DÖNGEZ	*Instructor Yasemin YILMAZ ÜSKÜPLÜ
Teaching Assist. Ayşe Eda ADIGÜZEL	*Instructor Ethem Turan
Teaching Assist. Büşra ATAM YÜKSEL	*Instructor Eda ERKAN
Teaching Assist. Canay TUNÇER	
Teaching Assist. İhsan Sefa ÖZER	

\*part time instructors

The ARC1001 Basic Design Studio in the Fall semester of 2023-2024 focused on introducing first-year architecture students to design principles, spatial perception, and creative processes through three distinct projects. The first project, “Abbasağa Variations,” explored urban context and design principles like rhythm and balance through collage compositions based on photographs of local buildings. The second project, “Cube-Net,” encouraged students to translate the mood and structure of a selected music piece into a three-dimensional cube using layered materials, grids, and light experiments. Lastly, “An Idle Path” involved designing a promenade integrated with a topographical site model, emphasizing human body-scale relationships, sensory experiences, and spatial narratives.

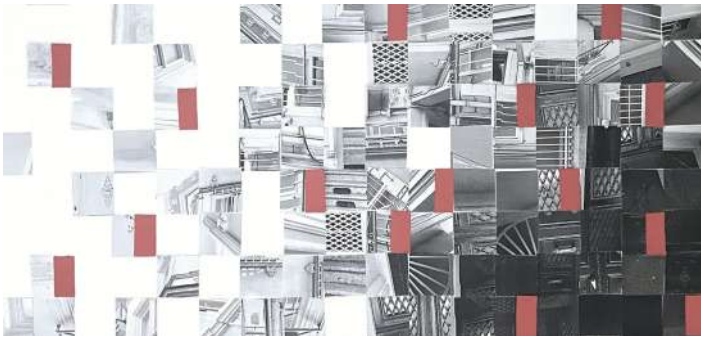
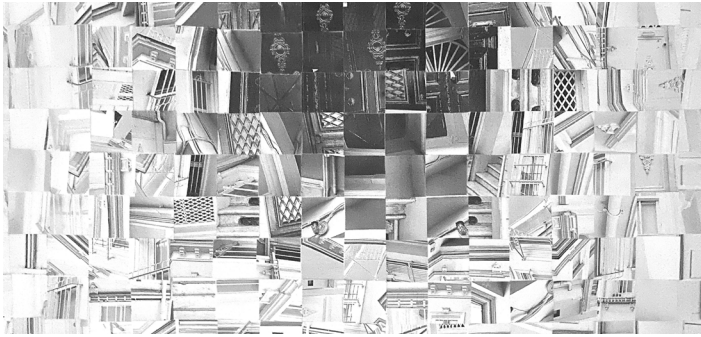
These projects offered students hands-on experience in critical thinking, collaborative work, and innovative design approaches. By blending analysis, experimentation, and creative expression, the studio nurtured foundational skills that prepare students for more advanced architectural challenges.

## INSTRUCTORS

Göksun Akyürek Altürk (coordinator)  
Pınar Şahin (coordinator)  
Zeynep Gül Söhmen Tunay  
Canan Ganiç  
Deniz Tümerdem  
Hande Ceylan  
Tansel Dalgali  
Yasemin Yılmaz Üsküplü  
Ayşe Eda Adıgüzel (T.A.)

# ARC 1001

BASIC DESIGN



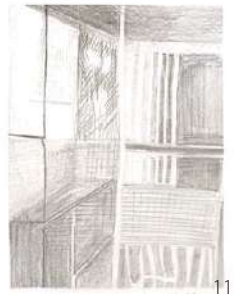
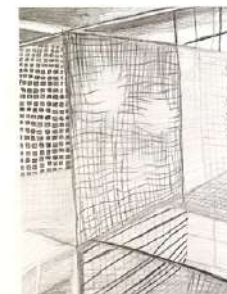
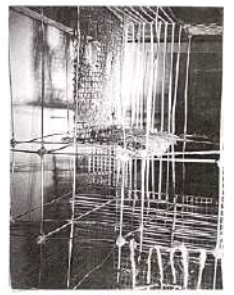
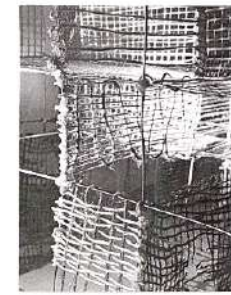
### ARC1001 | Abbasağa Variations | Elif İlhan

This project focuses on the abstraction of architectural features of residential buildings in Abbasağa, near the North Campus. Focusing on architectural elements such as materials, textures, proportions, and details, project aims to create collage that employs basic design principles like continuity, harmony, rhythm etc.

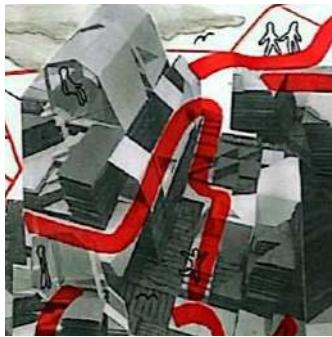
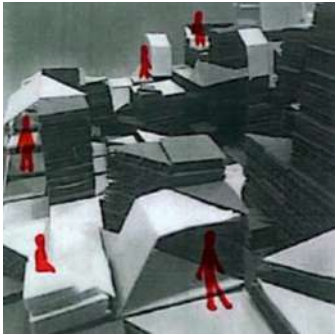
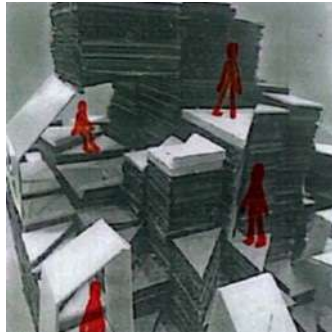
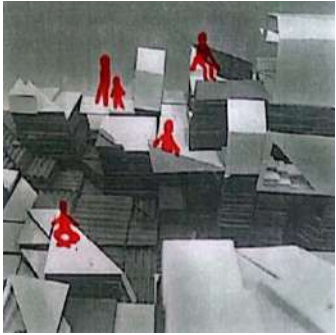
### ARC1001 | Confusion of Arrakis

#### Adan Faruja

"Dream of Arrakis" opens with metallic screeches and bell-like tones, building to deep drums and explosive highs. The song evokes mystery, fear, and tension, with dense, unsettling notes and shifting tones suggesting approaching danger. The project translates these emotions through layers of "unorganized mesh, square mesh, and threads," capturing the song's echo and depth.







#### ARC1001 | Folded Canyon | Selin Altuncu

The project features a promenade with activities like seating, dining, and observation areas. Folded, repetitive elements create harmony, coverings, and semi-lit spaces. Using triangular and square modules, the topography forms a canyon-like landscape, enhancing usability and comfort.



#### ARC1001 | Triangular Island Eylül Hazar

The "Triangular Island" project uses a grid system of four shapes to form a topography. Visitors follow a promenade starting at a pier, passing an exhibit area and seating spaces, and ending at a scenic terrace. Each stop offers unique experiences, creating an engaging journey across the island.

The ARC1002 Design Studies Studio in the Spring semester of 2023-2024 focused on sustainability, adaptability, and social impact through two distinct projects. The first project, "Stop'n Swap," invited students to design modular public spaces for community goods exchange, emphasizing interaction, environmental awareness, and flexibility. Students conducted site analyses, developed concepts, and created scaled models using techniques like folding, aggregation, and wireframing. The second project, "Reconnect," addressed post-disaster recovery architecture, with timber-based modular designs fostering social interaction and resilience. Teams explored material properties, developed technical drawings, and built 1:1 scaled components to propose adaptable and sustainable architectural solutions.

Both projects provided students with hands-on experience, encouraging critical thinking, creativity, and collaboration. By blending conceptual development, material experimentation, and practical design processes, the studio equipped students with essential skills to address real-world architectural challenges.

## INSTRUCTORS

Göksun Akyürek Altürk (coordinator)  
Pınar Şahin (coordinator)  
Zeynep Gül Söhmen Tunay  
Canan Ganiç  
Deniz Tümerdem  
Hande Ceylan  
Tansel Dalgali  
Ayşe Eda Adıgüzel (T.A.)

# ARC 1002

## DESIGN STUDIES



## GROW A GREENER FUTURE

SEEDS & SEEDLING SWAP FOR ADULTS

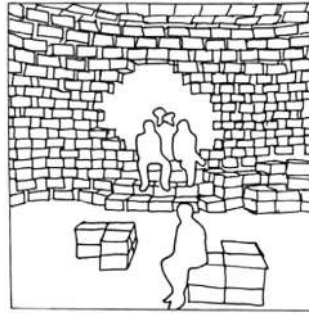
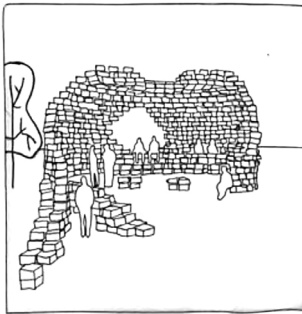
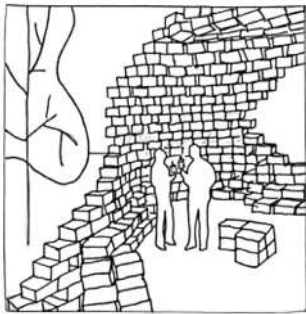
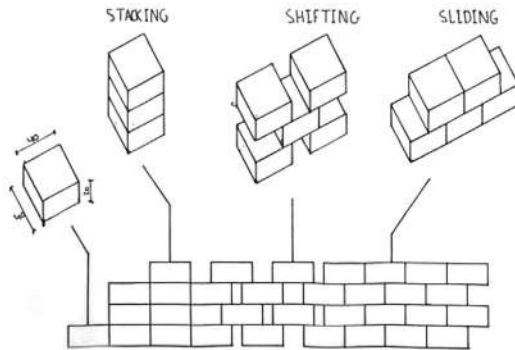
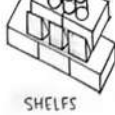
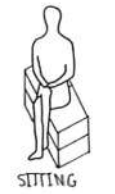


SEEDS & SEEDLINGS  
MUST BE LABELED WITH  
NAME & SOME CARE  
TIPS

SEEDLINGS MUST BE  
PESTICIDE FREE  
&  
HEALTHY

MUST HAVE AT LEAST  
ONE SEEDLING OR SEEDS  
PACKET TO TRADE

## AGGREGATION

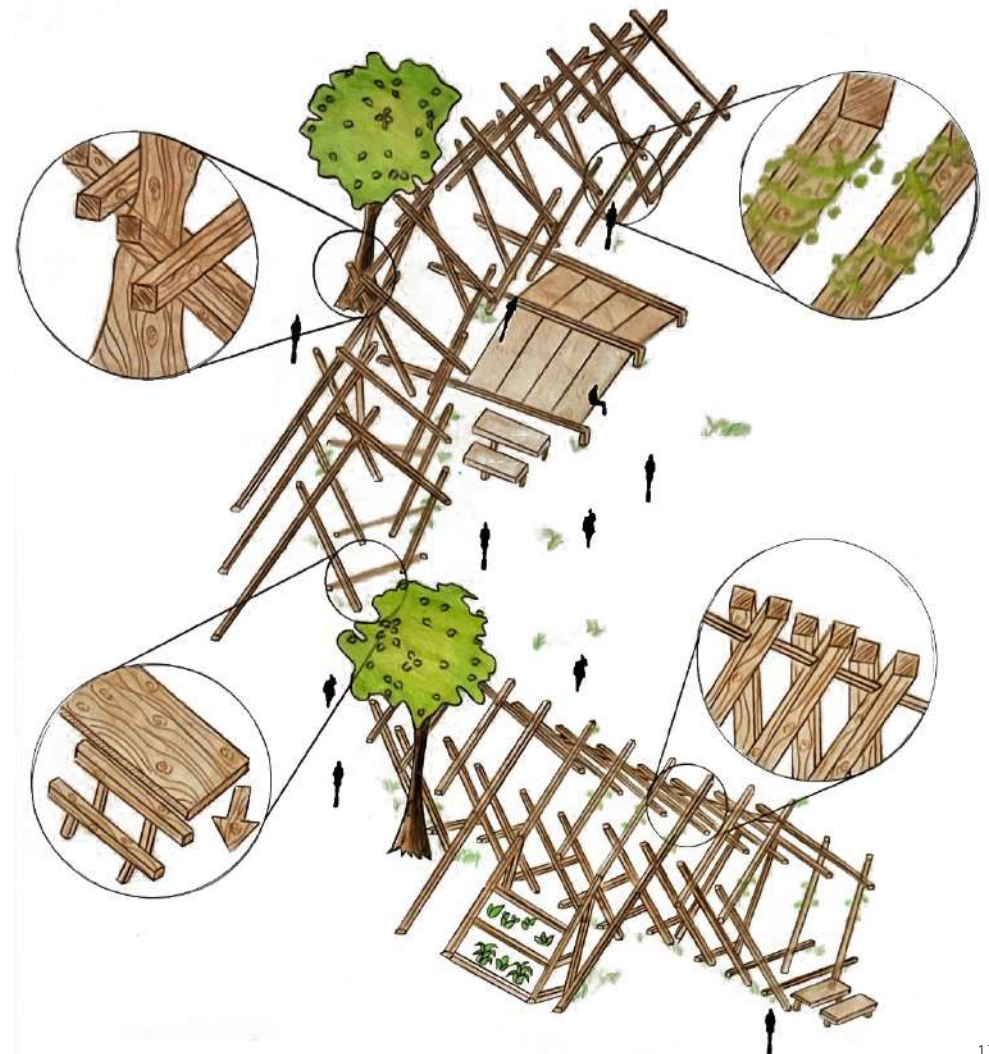


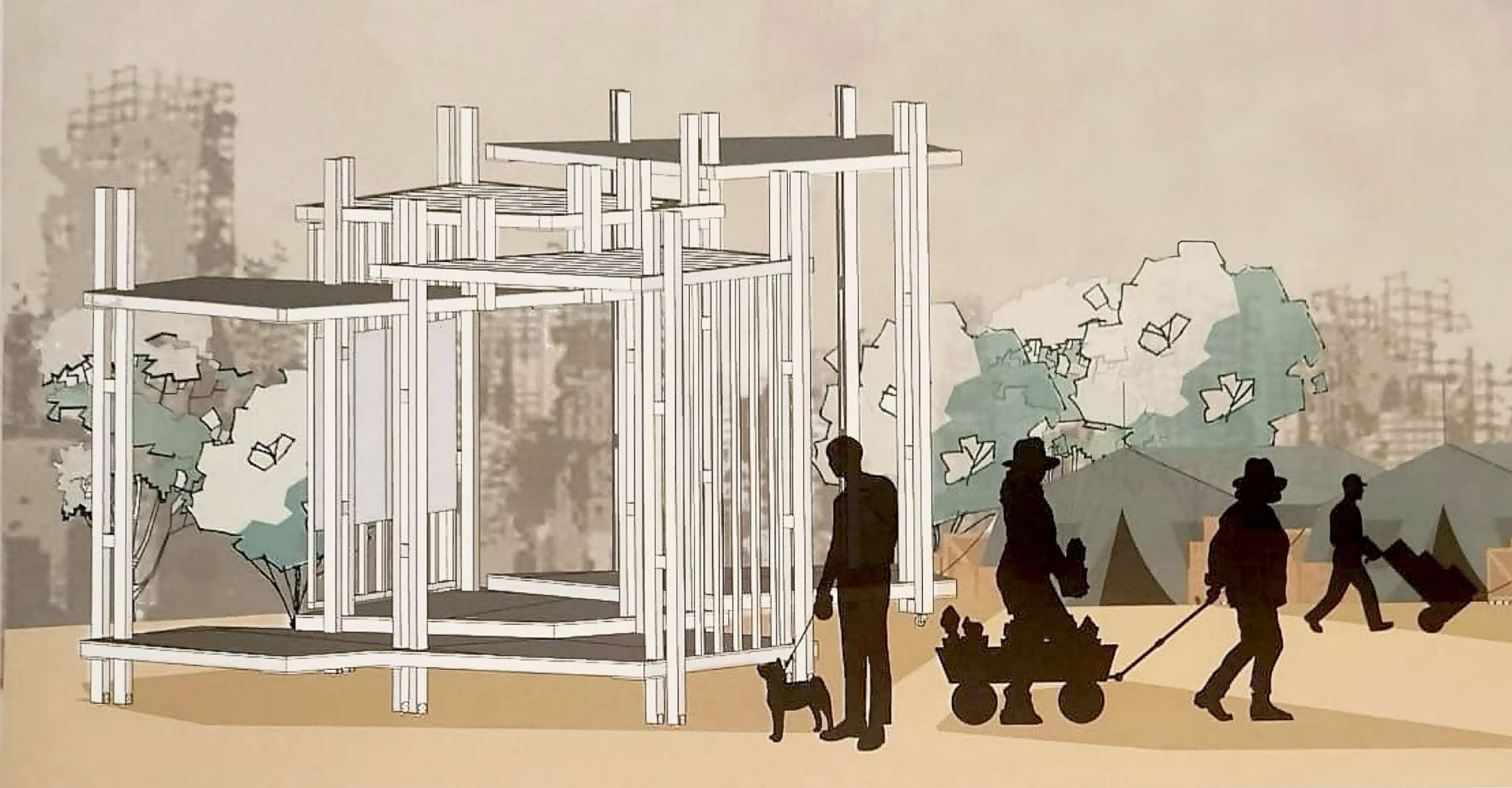
## ARC1002 | Blooming Exchange | Ameen Kadaan

A vibrant hub for plant enthusiasts to swap seeds, share gardening knowledge, and explore sustainability. Unified spaces include workshops, cozy seating, swap zones, and gardening beds, fostering connection and learning. The design promotes biodiversity and community in an eco-friendly setting.

## ARC1002 | Spine | Moozhan Gholinataj

The Spine is a 70 m<sup>2</sup>, 3 m-high semi-open tunnel-like structure designed to harmonize with its topography. It supports activities like plant swapping and care, with timber extensions for built-in plant pots and storage. Its open design allows plants to grow within the structure while offering views of the surrounding park. The project blends people and nature, creating a space that connects the interior with its environment.





#### **ARC1002 | Arch-Aid**

**Ameen Kadaan, Bengisu Sakar, Efe Poyraz Ulper  
Eymen Sen, Irem Sekerci, Madina Baghirli, Rahaf Abuain,  
Melike Naz Suaipoglu, Lara Ezgi Oktay,  
Ethar Hassan Abdulhameed Hassan Elbeisi**

This initiative establishes a post-disaster communication hub for ages 15-20, addressing their social, emotional, and financial needs. Through skill sharing and community boards, it provides material assistance and open communication, fostering belonging and empowerment.

The hub, made primarily of timber for its sustainability and quick assembly, creates a warm, resilient space for support. Its low carbon footprint ensures environmentally responsible, lasting aid.

Students of ARC2001 studied the changing and deteriorating neighborhoods of İstanbul: Çengelköy and Gülsuyu. Neighborhood was the material to reconsider in terms of social, cultural, political, technological, and contextual aspects affecting “how we design” in the context of “how we live”. Students searched for characteristics of the neighborhood in multiple aspects and represented and questioned them with appropriate tools and techniques. Through analysis and research, students developed scenarios and programs and an architectural proposal to be the infrastructure to serve the commons and everyday life of the neighborhood.

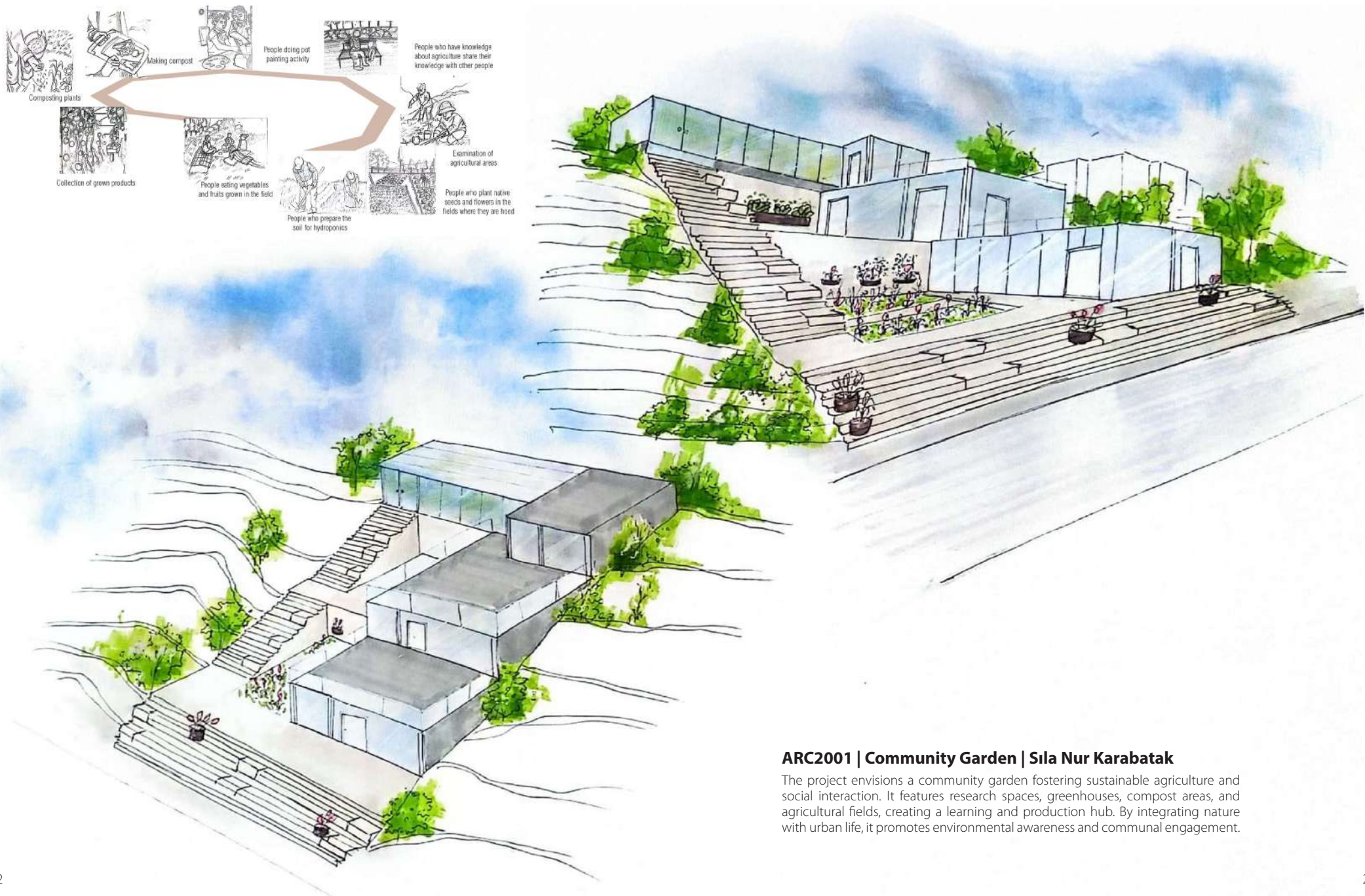
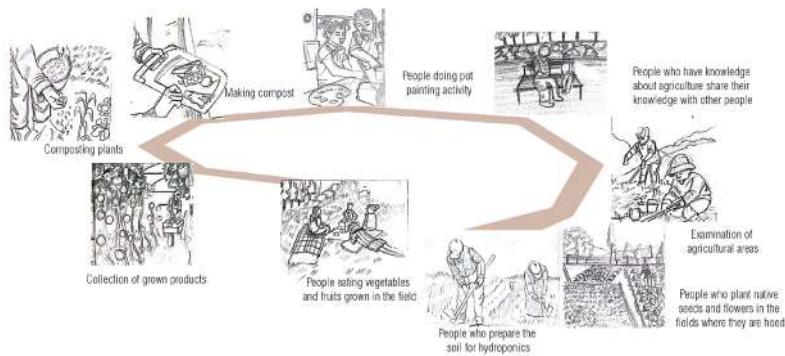
#### INSTRUCTORS

Durnev Atılğan Yağan (coord.)  
Berna Yaylali  
Aslı Can Varon  
Kutsan Özoral  
Seda Civelek  
Dilara Demiralp  
Ethem Turan  
Canay Tunçer Yıldırım (T.A.)

# ARC 2001

ARCHITECTURAL DESIGN STUDIO I





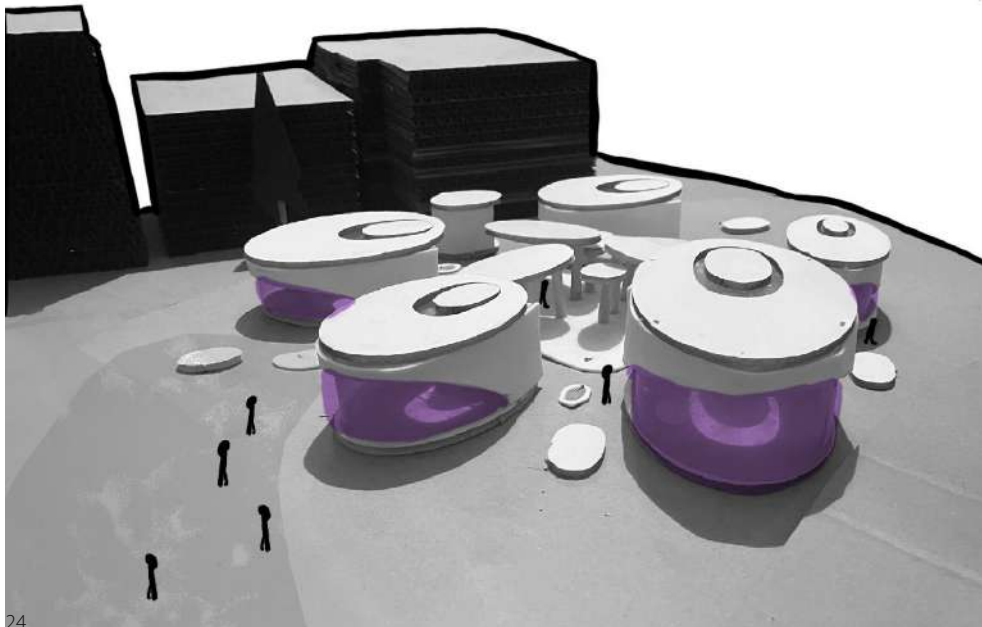
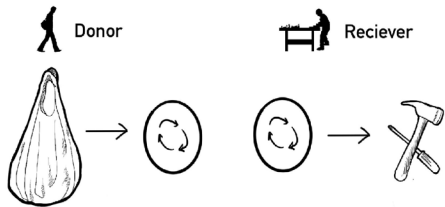
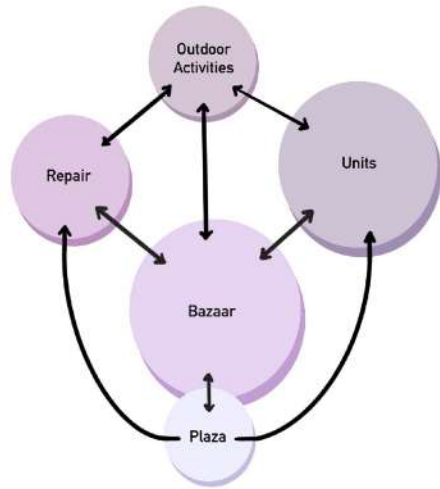
### ARC2001 | Community Garden | Sila Nur Karabatak

The project envisions a community garden fostering sustainable agriculture and social interaction. It features research spaces, greenhouses, compost areas, and agricultural fields, creating a learning and production hub. By integrating nature with urban life, it promotes environmental awareness and communal engagement.

## ARC2001 | Ratio Reuse

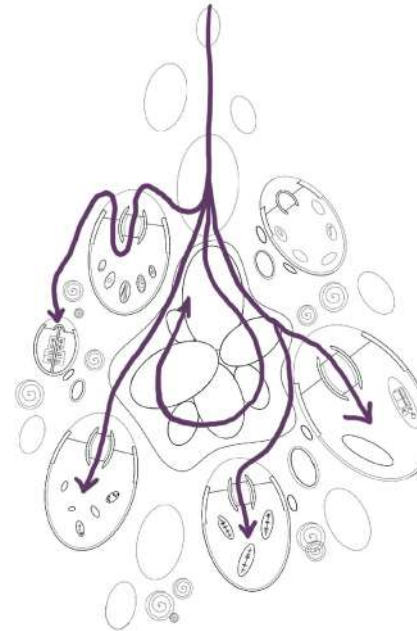
**Yasmine Saleh**

Because of trash and abandoned items, the peaceful neighbourhood of Cengelkoy struggles to establish a clean and uniting environment along the neighborhood. A centre for material reuse can lower costs, encourage sustainable behaviours, and facilitate participation. The building has four apartments, a repair business, a lavatory and a covered space for gathering places and weekly bazaars.

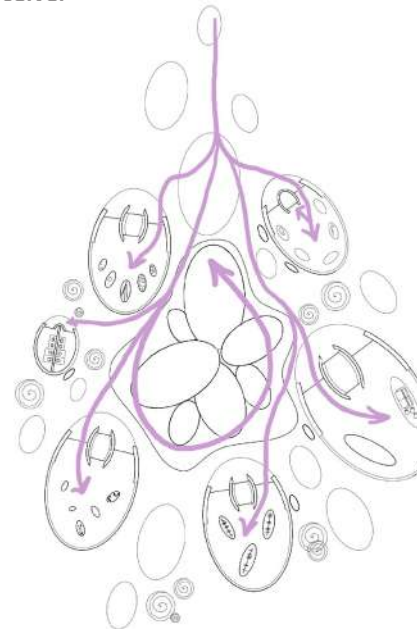


## Circulation Routes

### Donor



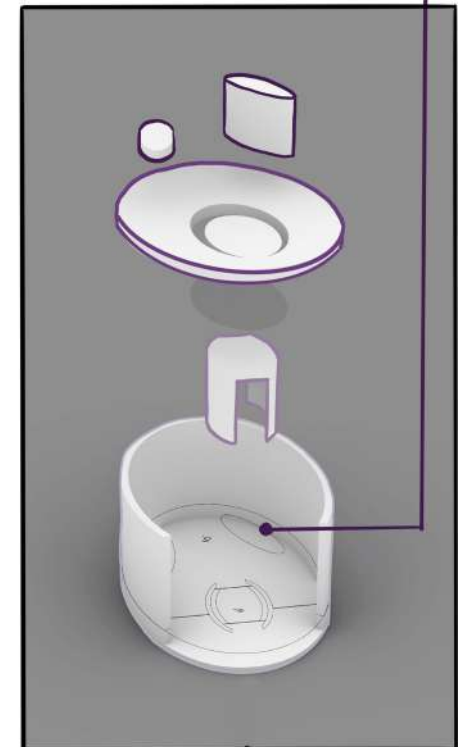
### Receiver



Shadow and light due to glazing

- Furniture according to unit func"
- Roof system with glazing
- Sub-unit for tagging system for donors
- Base wall with glazing for natural lighting and enclosure

### Unit Setup





Recent disasters like earthquakes, floods, droughts all over the country have reminded the significance of making cities resilient in Turkey. In line with that, the urban renewal of poorly constructed buildings seems to be an urgent obligation in Istanbul, housing almost one fifth of the overall population of the country, differentiating itself from the ongoing gentrification processes. As the studio theme, we offered interim social (rental) housing to be subsidized by local and central administration and provide affordable rentals to people in the neighborhood (homeowners and renters) for a 1-2 year period during the renewal/reconstruction process. The project was expected to aim to reduce the vulnerability of disadvantaged groups by addressing various household types and age groups, resulting in a variation in the size and spatiality of the housing units provided.

Within this context, Mahmut Şevket Paşa neighborhood was selected to be studied at the studio. Students started developing a critique of existing housing environments and how they fit whom they serve. They provided the necessary documentation, maps, and research on the context of the site. They defined the scenario, mix, weighting, and architectural program of the housing proposals for the characteristics of their selected sites.

## INSTRUCTORS

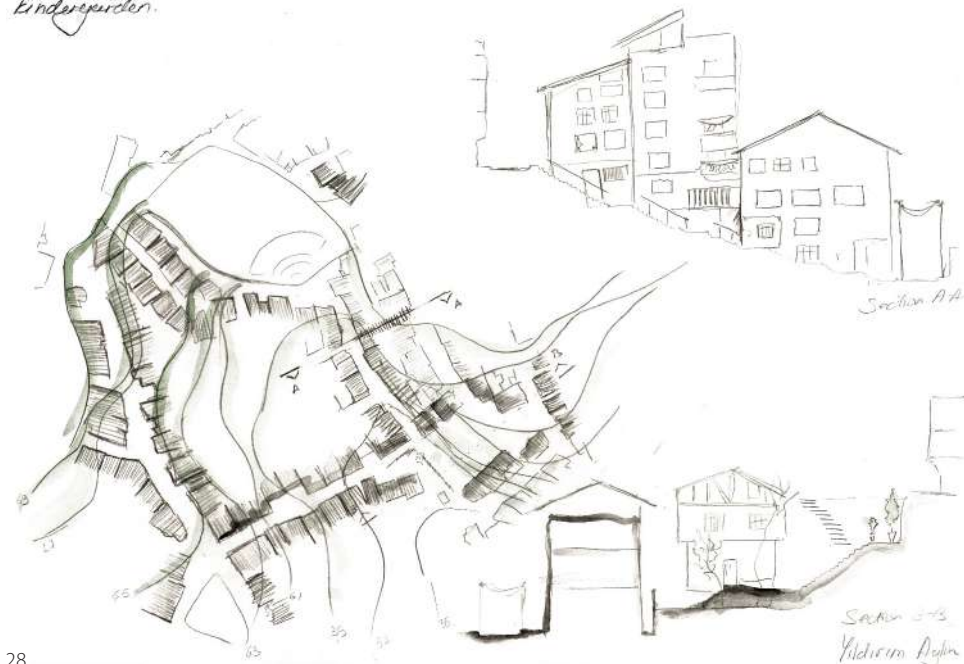
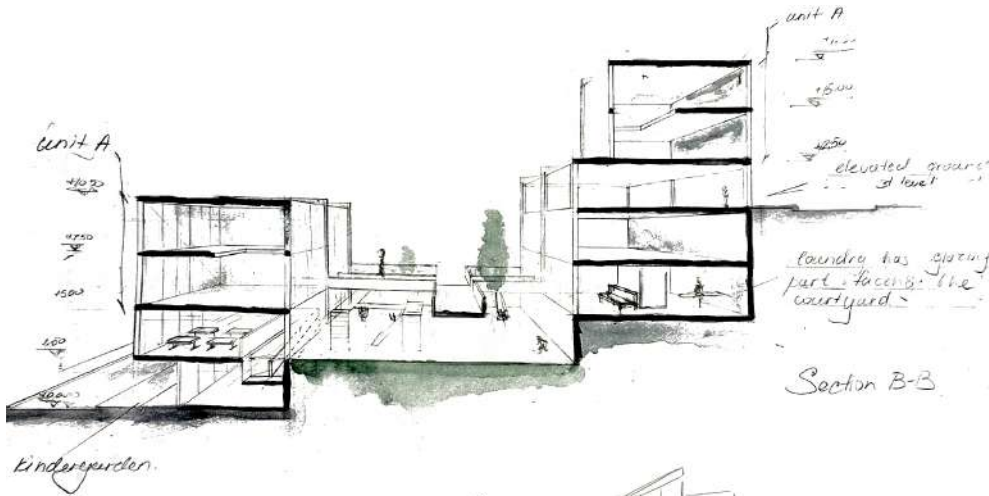
Nilay Ünsal Gülmez (coord.)  
Berna Yaylali  
Aslı Can Varon  
İlhan Aydın Meltem  
Hatidza Isanovic  
Dilara Demiralp  
Ethem Turan  
Canay Tunçer Yıldırım (T.A.)

# ARC 2002

## ARCHITECTURAL DESIGN STUDIO II

## ARC2002 | Housing Units | Aylin Yıldırım

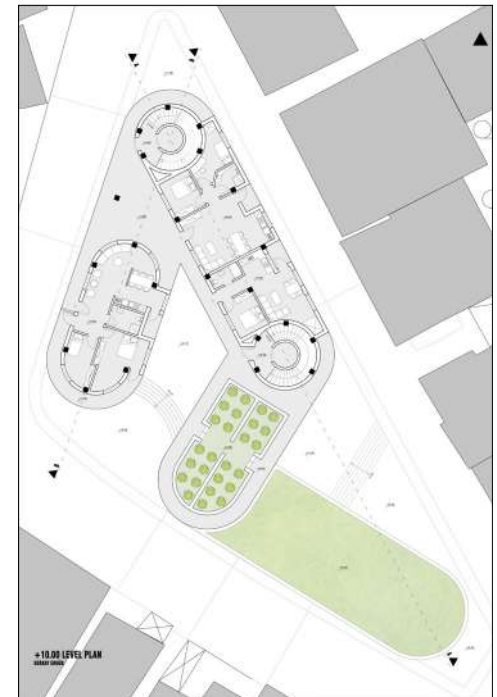
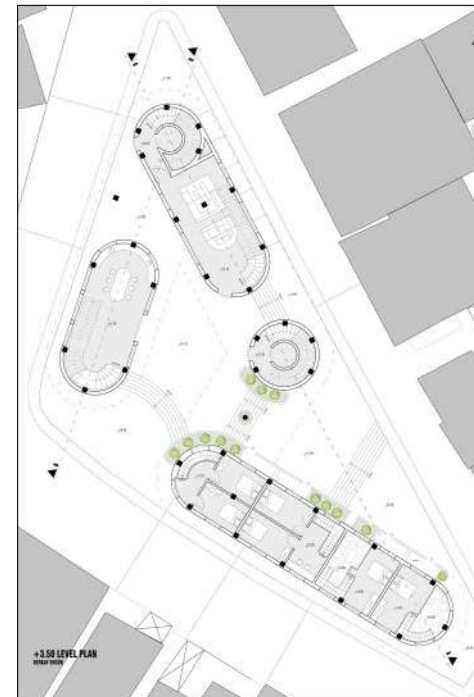
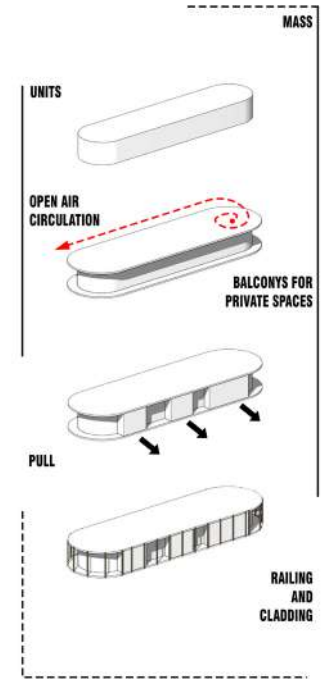
The relationship of housing units create a promenade, which provides different scenarios and emotions for passersby, for example having a view from the bridge on the closed kindergarten playground, or passing through gathering area for neighbourhood. Created places can provide residents with various spaces, like private living units, gathering places for neighbours, common areas for daily activities, or open social spaces.

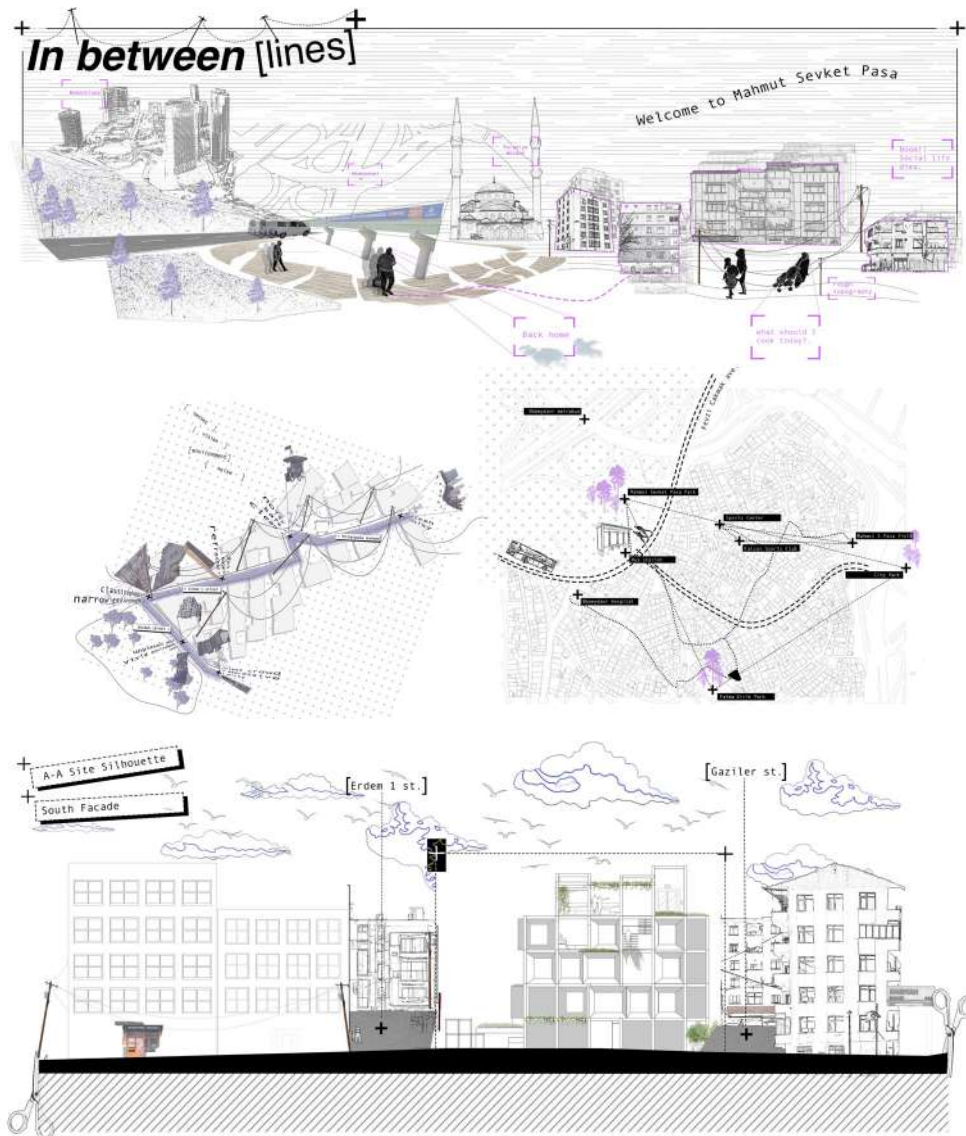


## ARC2002 | Shifted Porosity

### Berkay Ergün

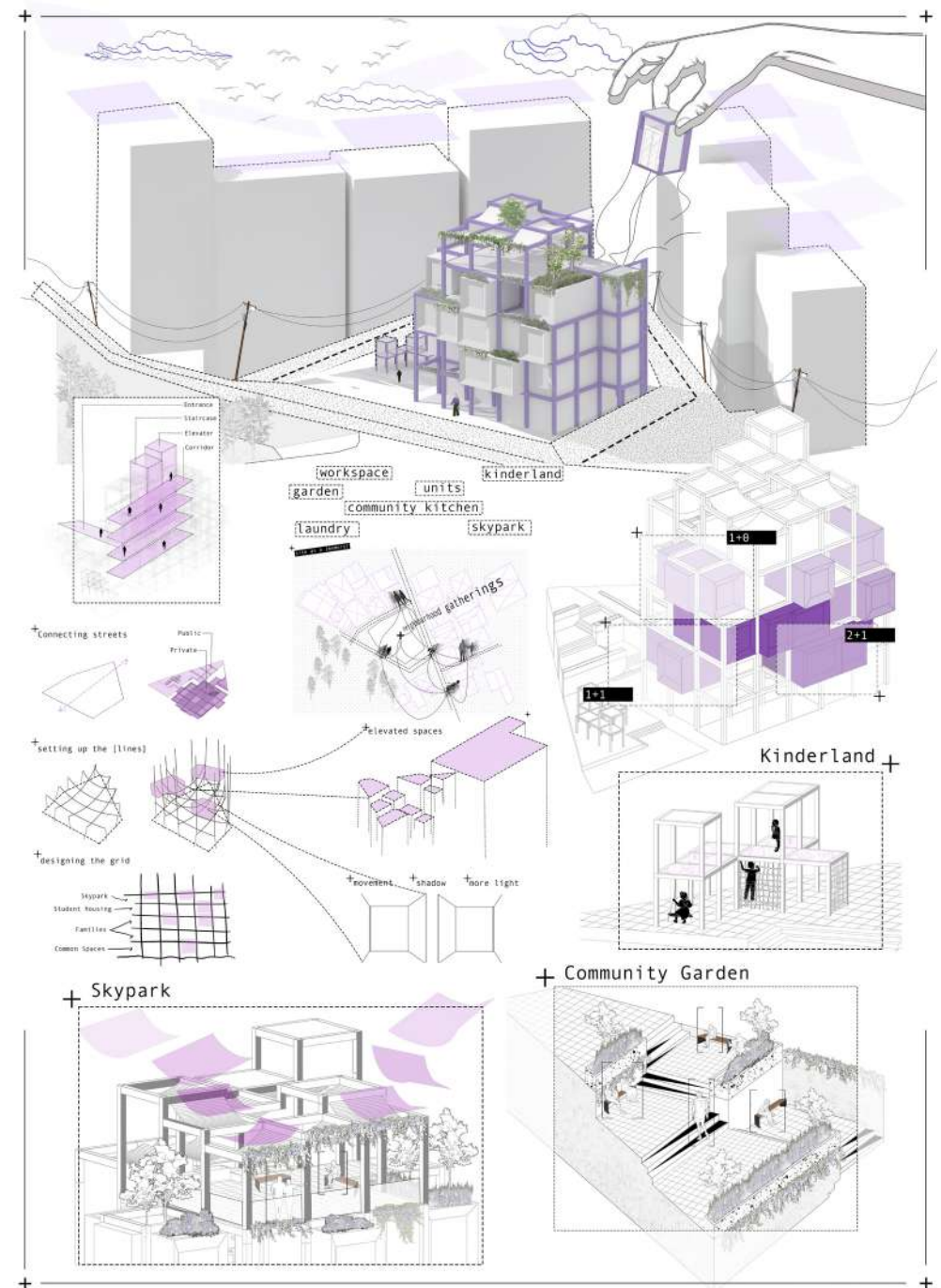
This project explores urban dynamics through sensory mapping, movement analysis, and spatial layering. By integrating public and private spaces, it fosters social interaction while ensuring privacy. The project focuses on creating a contrast between compact surroundings and the plot. By creating openings at different levels, a porosity effect is achieved. To avoid an overly compact appearance, the units are pushed and pulled, giving the facade a more dynamic and layered impression. Transparent materials, open-air circulation, and modular units create a dynamic environment shaped by neighborhood needs.





### ARC2002 | In Between [Lines] | Umid Akhundlu

The project focuses on social housing in the Mahmut Şevket Paşa neighborhood, addressing the impacts of gentrification. The design centers on "lifelines," physical lines and cables that symbolize the continuity of the neighborhood's identity and the resilience of its community. The project aims to offer temporary units to displaced residents, acknowledging their struggles and supporting their role in shaping the neighborhood's future.





ARC 3001 Research & Training Facilities in Yenibosna project focuses on the researches in the 21st century that has driven by rapid advancements, technological progress and global networks. Global issues such as climate change, public health, and social inequalities are powerful drivers of research environment. Modern research environments in our time should be capable to respond to the evolving needs of researchers. These places while fostering an environment for innovative thinking, focusing on experimental media, not only through traditional disciplines, but also learning by experience, will also serve as a social place for the people providing meeting, exhibition and workshop spaces that are open to general public. The project comprises of two phases. The first phase involved site analysis, including urban fabric, historic buildings, heights, and traffic. Students developed volumetric proposals, considering building contours, size, form, geometry, and integration with public activities. The ground level serves as an extension of urban space, ensuring accessibility. In the second phase, students designed the technology and research environment, addressing spatial, structural, and technological needs. They explored the building's impact, its integration into the area, and its functional requirements.

## INSTRUCTORS

Serengül Seçmen (coord.)  
Salih Ceylan  
İrem Maro Ümran Topçu Meltem Vatan  
Boğaçhan Dünderalp Ahmet Ergelen  
Eda Erkan  
Büşra Atam Yüksel (T.A.)

# ARC 3001

## ARCHITECTURAL DESIGN STUDIO III



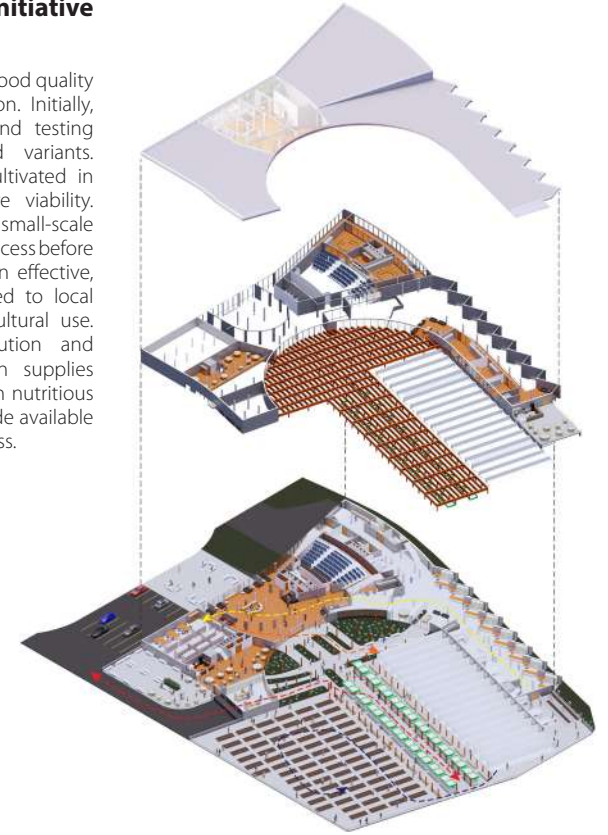
### ARC3001 | Design and Innovative Center | Suhaib Elrishi

The project features a promenade with activities like seating, dining, and observation areas. Folded, repetitive elements create harmony, coverings, and semi-lit spaces. Using triangular and square modules, the topography forms a canyon-like landscape, enhancing usability and comfort.

### ARC3001 | Urban Farming Initiative

#### Batuhan Uluç Uyanık

The program focuses on enhancing food quality and yield through seed modification. Initially, regular seeds undergo research and testing to develop improved, high-yield variants. These modified seeds are then cultivated in controlled environments to ensure viability. Following successful trials, small-scale greenhouse cultivation refines the process before large-scale distribution. Once proven effective, the seeds are voluntarily introduced to local communities for widespread agricultural use. The final stage involves distribution and commercialization. Bulk production supplies local schools and youth centers with nutritious food, while surplus products are made available in grocery stores for easy public access.







## ARC3001 | The Culture and Traditional Research Center

### Dalial Dzhbeili

This center in Yenibosna is built to support cultural heritage and research. It includes laboratories for traditional arts, a library on cultural studies, and workshops for hands-on learning. The center aims to promote cultural exchange and education among researchers, students, and the community. It combines modern design with traditional aesthetics and improves accessibility. The project uses natural light and features brickwork on the ground floor to connect with its cultural background.



ARC 3002's project theme, School for Architecture in Bomonti Neighborhood is envisioned as a vocational institution dedicated to providing students with a comprehensive foundation in architecture, enriched by a wide spectrum of disciplines. The school fosters innovation through experimental media, hands-on learning, and practitioner engagement. Serving as a cultural hub, it offers meeting, exhibition, and collaboration spaces for the public. Beyond a workspace for studio projects, it acts as a living model where students learn to read and understand architecture. Architecture schools are not typical academic buildings that the demand for open studio space, critique spaces that accommodate large gatherings, and space for resources like a workshop or digital workrooms make flexibility an important factor for it. The students are provided with a building program, but the main theme of the school is within the students' responsibilities. However, the overarching theme and the creative direction of the school are dynamically shaped by the students' initiatives and responsibilities. This approach ensures that the educational experience is not only about acquiring knowledge but also about empowering students to take ownership of their learning environment, thereby cultivating a generation of architects who are both skilled practitioners and thoughtful contributors to the broader cultural landscape.

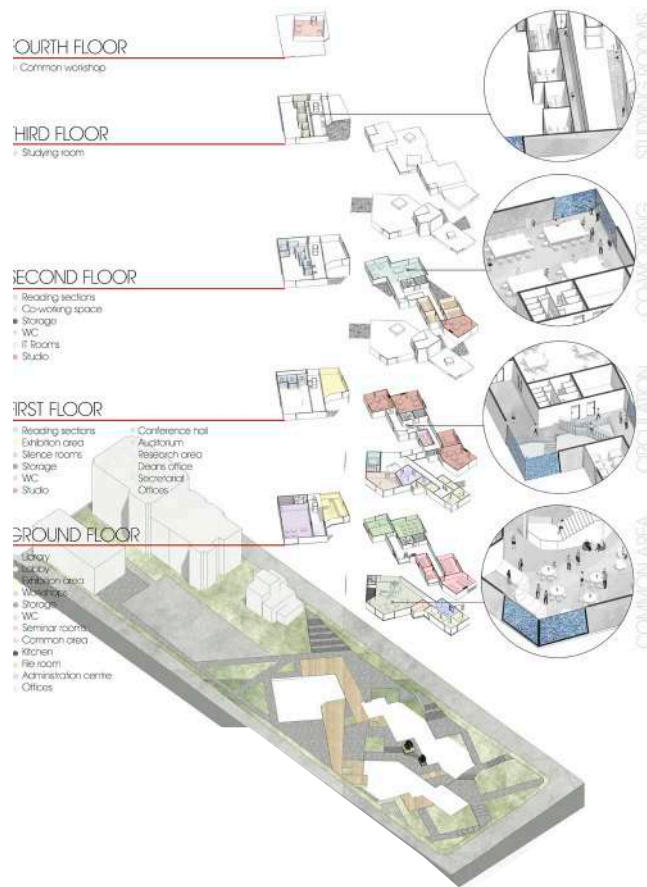
## INSTRUCTORS

Serengül Seçmen (coord.)  
Ümran Topçu  
Yiğit Yılmaz  
Meltem Vatan  
Boğaçhan Dünderalp  
Seda Civelek  
Büşra Atam Yüksel (T.A.)

# ARC 3002

## ARCHITECTURAL DESIGN STUDIO IV





### ARC3002 | Architectural School | Dalial Dzhbeili

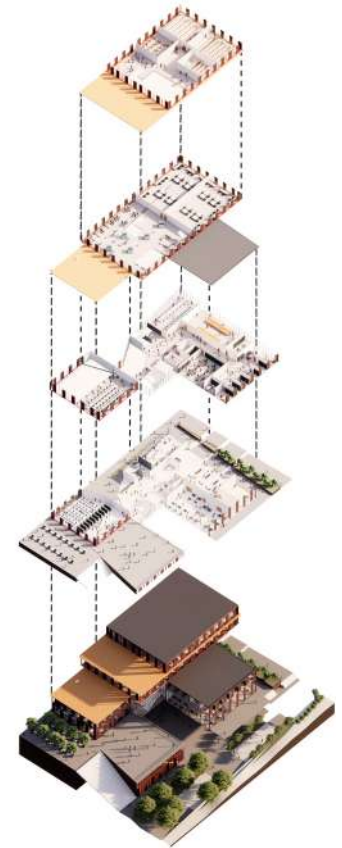
The architectural school in Bomonti, Istanbul, blends contemporary design with the area's industrial heritage, fostering creativity and collaboration. Open studios, flexible classrooms, and sustainable practices promote innovation and environmental awareness. Strategically positioned between contrasting neighborhoods, the school bridges tradition and modernity. A curtain wall facade enhances transparency, linking the interior with the city. This project revitalizes city, transforming it into a hub for architectural discourse and cultural exchange.

### ARC3002 | School for Architecture in Bomonti

#### Tahir Emre Çilesiz

The project merges the altered topography with its program to create seamless transitions between market spaces. Defined as an abstract extension of its surroundings, the design balances social and private areas by moving from the whole to the part. Public engagement is prioritized, with active users—particularly educational groups—integrated into the building.

Key spaces foster interaction among students, locals, and market visitors, enhancing social connectivity. To maximize visibility and daylight utilization, the market facade remains open, while the school features a transparent design, reinforcing its connection with the surrounding environment.

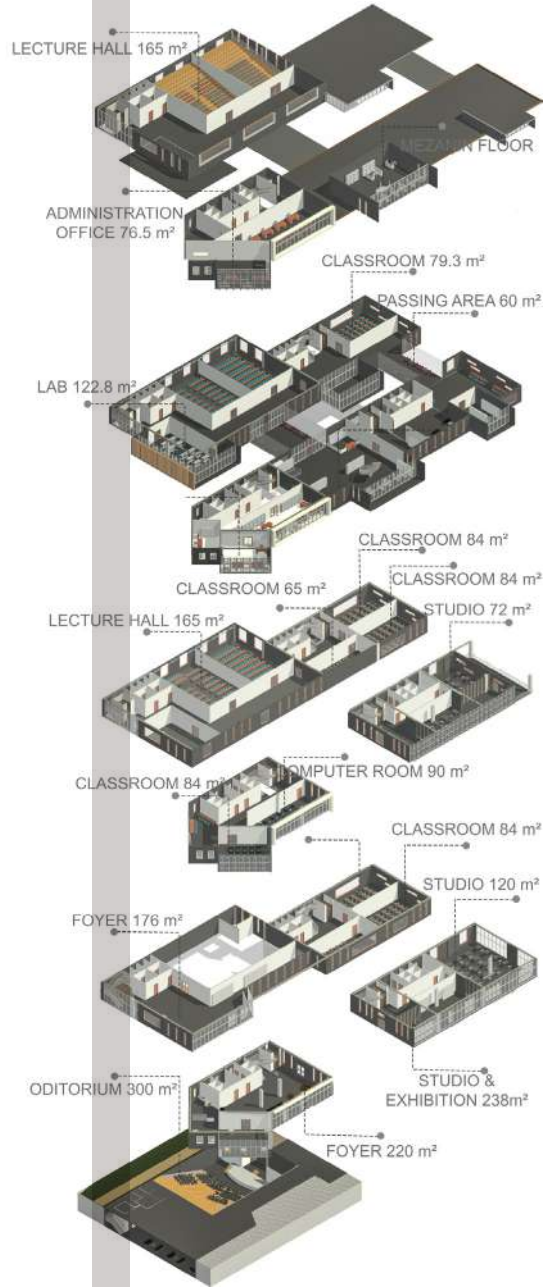




## ARC3002 | Bomonti School

### Mehmet Emre Toyçi

This project establishes a strong connection with Bomonti Island by integrating the existing art workshops into the design of an architecture school. The selected site, facing the city center, was strategically chosen due to the impact of a 10-story parking structure that casts a shadow over Bomonti Island. The existing street axis, which crosses the site, was utilized to enhance spatial flow, seamlessly linking the school's entrance with the narrow access street of Bomonti Island. This approach not only strengthens the relationship with the urban fabric but also preserves and highlights the historical and cultural significance of the area.





ARC4001 Architectural Design V studio focuses on Mixed-Use Development in a New Age.

An urban hub which serves commercial, recreational, cultural, residential needs and outdoor activities with landscape and hardscape. It serves as a link to the waterfront for urban emergency situations. The mixed-use complex consist of a variety of facilities that meet the urban design and needs of multiple generations and provide a high degree of flexibility in the face of changing conditions for sustainable development, urban emergency and resilience. Students are challenged with the potentials of an urban environment with macro and micro scales. Of equal importance are public and private spaces, urban context with its complexity, communal behavior and public dwellings. Creative thinking and fluid design proposals open to future adaptations are appreciated. The students are encouraged to develop a program according to the site, concept, and selected scenarios, which should cover at least the following functions.

## INSTRUCTORS

Murat DÜNDAR  
Sema SOYGENİŞ  
Maan CHIBLI  
Bülent Onur TURAN  
Melek Elif SOMER (coord.)  
Sinem KÜLTÜR  
Meriç ÜĞDÜL  
Gözde KIZILKAN  
İhsan Sefa ÖZER (T.A.)

# ARC 4001

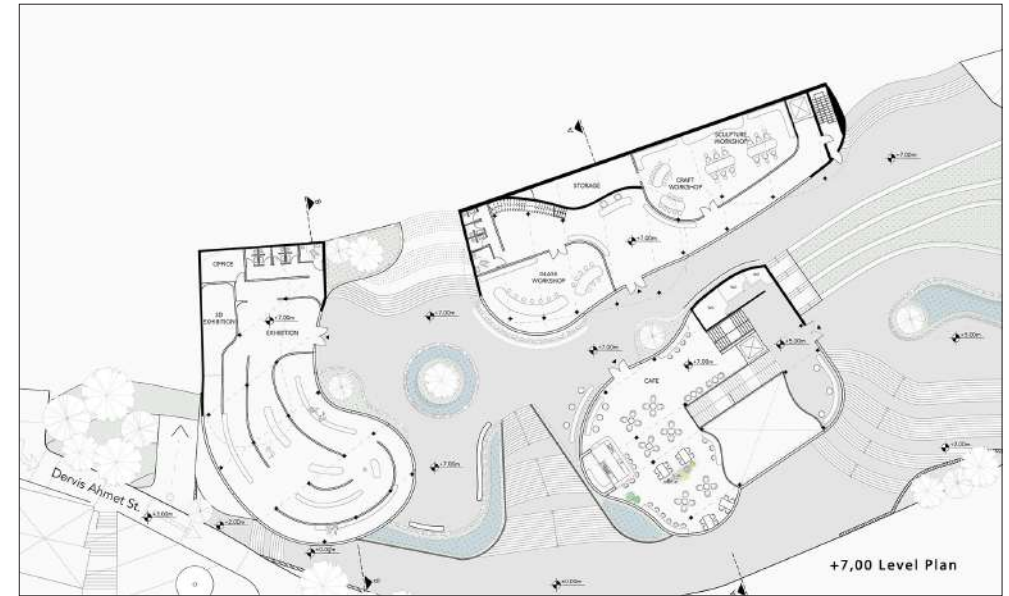
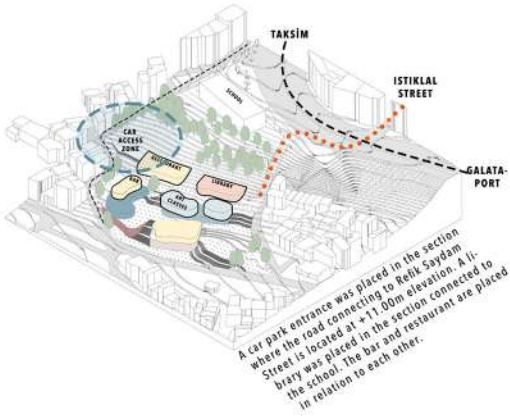
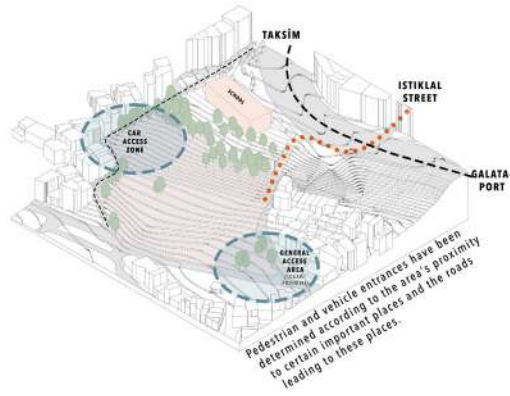
## ARCHITECTURAL DESIGN STUDIO V



## ARC4001 | Path of Art

### Ceren Gökçe Özdemir

"Path of Art" tries to lure the cultural vibrancy and artistic activities which are particularly associated with Istiklal Street to the project area, which, although physically very close, has remained far away from these activities. The project tries to expand the volume of the cultural and artistic revival in Beyoğlu, which is also supported by the government, and tries to create a flexible, transitive and fluid circulation.



ARC4002 Degree Project Design Studio covers a project themed “Technology Museum in an Urban Context in Harem/Maçka”. A technical museum offers the familiarization and the understanding of technologies as well as the development of a new spectrum of activities to the public. It aims at creating a social destination promoting a new attraction for culture, technology, and tourism serving as a future landmark in the city. Students are asked to design a technology museum, as a new visitor destination, that offers the public a unique environment that facilitates the familiarization and understanding of the technologies from our everyday lives, as well as the development of a new spectrum of innovative and interactive exhibitions also covering media and virtual contents. It claims to create a social destination promoting a new attraction not only for technology but for culture and tourism as well by serving as a future landmark, a part of the identity of the city and its residents also with its exterior facilities and design of hardscaping and landscaping, expanding museum activities and experiences outside the museum visit. In this way, it is expected to increase the quality of city life by including a variety of spaces and activities for public usage.

## INSTRUCTORS

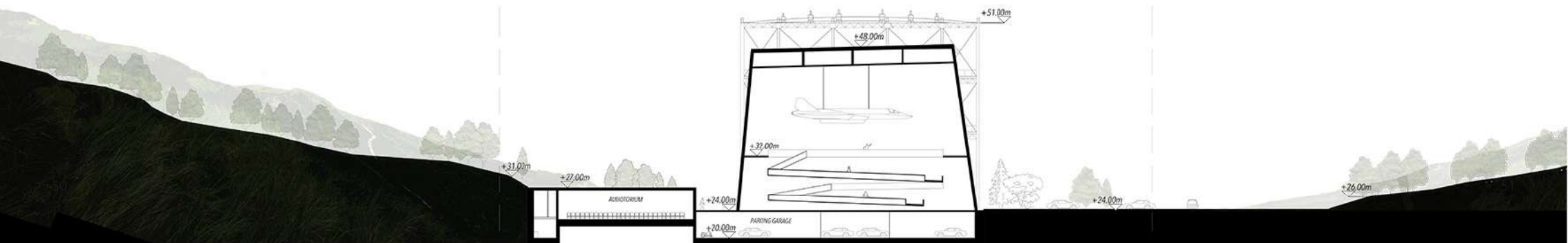
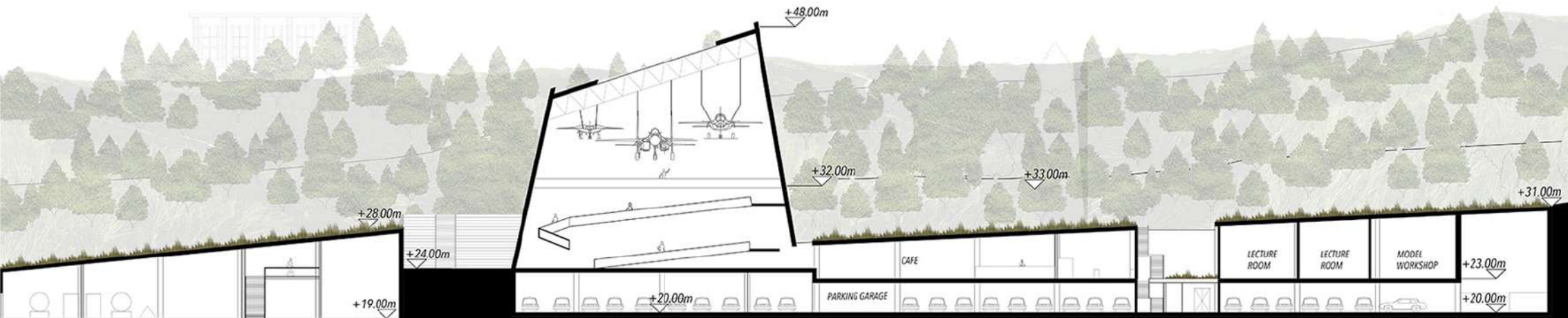
Sema Soygeniş  
Ali Devrim Işıkkaya  
Maan Chibli  
Bülent Onur Turan  
Melek Elif Somer (coord.)  
Sinem Kültür  
Meriç Üğdül  
Gözde Kızıllan  
İhsan Sefa Özer (T.A.)

# ARC 4002

## DEGREE PROJECT DESIGN

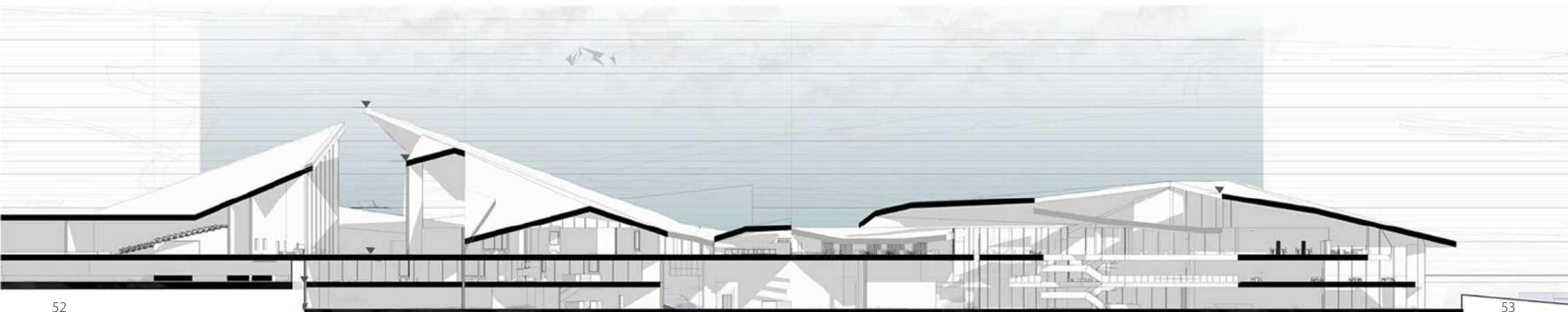
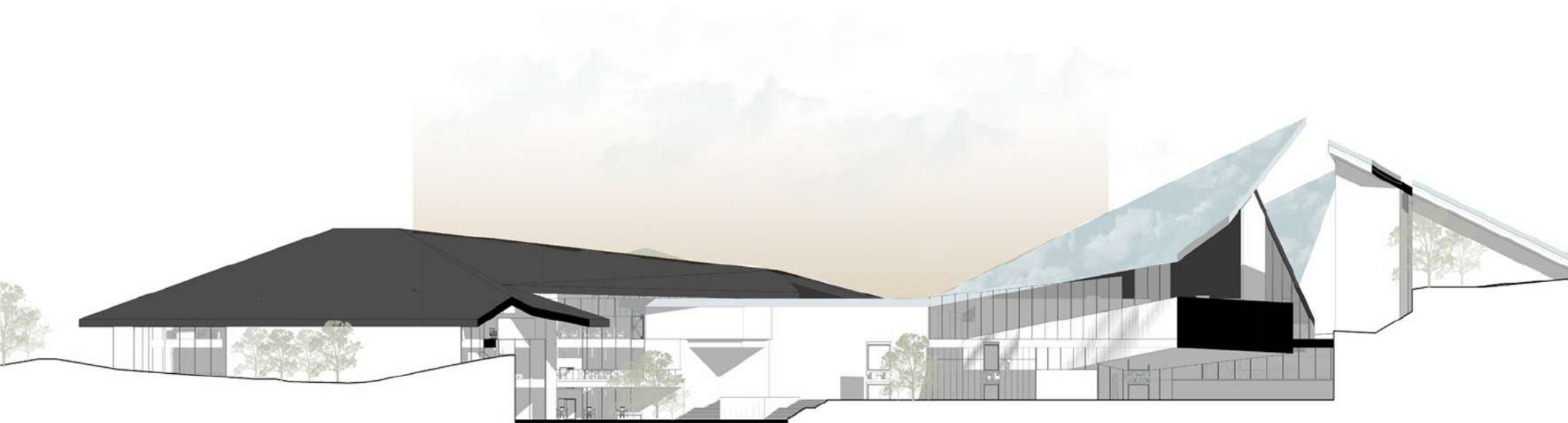
## ARC4002 | Aviation and Space Museum | Serra Odabaşı

An aviation and space museum is designed beneath Maçka Park, ensuring the preservation of its natural continuity and integration with the topography. While maintaining public accessibility, it also serves as a cultural hub, addressing pedestrian flow disruptions caused by past constructions. Inspired by Maçka's history and its connection to Atatürk, the museum highlights aviation and space exploration, complementing nearby Military Museum exhibits. Adopting an anti-object approach, the structure is fully buried and covered with a walkable green roof, seamlessly blending into the park's landscape.



### ARC4002 | Maçka Future Museum | Tala Mohammed

This center in Yenibosna is built to support cultural heritage and research. It includes laboratories for traditional arts, a library on cultural studies, and workshops for hands-on learning. The center aims to promote cultural exchange and education among researchers, students, and the community. It combines modern design with traditional aesthetics and improves accessibility. The project uses natural light and features brickwork on the ground floor to connect with its cultural background.





## **ARC4002 | Fragmenta | Kawther Al-Jumaili**

As the deconstruction progresses towards the seaside, the design integrates with the natural landscape, blurring the boundaries between the built environment and the natural surroundings. The exterior of FRAGMENTA is characterized by a Voronoi pattern that gradually deconstructs as it approaches the seaside. This deconstruction mimics natural erosion and fragmentation processes, creating a visually dynamic and organic transition from the more structured landward side to the more open and fragmented seaward side.







instagram



bau\_architecture



bau\_interiorarchitecture



bau\_industrial design



bau\_fashiondesign